

Hey!

We are designing a new wheelchair and we would really like to know about how you find your current wheelchair and how you would like it to be better.

Whizz-kidz
move a life forward

Supported by NHS National Innovation Centre



Devices for Dignity is supported by NIHR, TSB, EPSRC and MRC

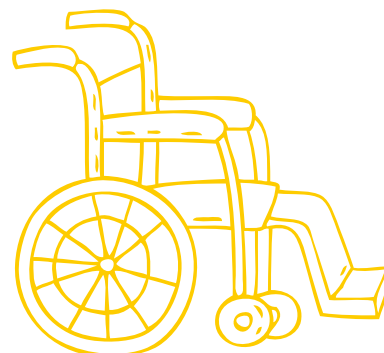
Your input will be really helpful as you are experts on what it is like to use a wheelchair and the things that frustrate you.

The following survey asks lots of things about wheelchairs which we would like more information on and it would be great if you could answer these. Don't worry if you don't want to answer them all.

And if you need help from someone to complete the survey, that is OK too.

If you don't want to answer the survey but would like to send us some of your thoughts about wheelchairs, you can email these to Nicola.Heron@d4d-htc.org.uk or give us a ring on 0114 271 3737.

All your answers will be kept anonymous and taking part is entirely voluntary.



Help us design a better wheelchair

circle

tick ✓

write and draw



1. How old are you?

- a. Under 5
- b. 5 – 10
- c. 11-16
- d. 17-19
- e. 19 +

2. Do you use a manual wheelchair (non powered)?

Yes No

- a. If yes, are you able to drive it yourself?

3. Do you use a powered wheelchair?

Yes No

a. If yes, are you able to drive it yourself?

b. Do you use a joystick to drive?



4. How long have you used a wheelchair for?

Manual

Less than 1 year

1 – 2 years

More than 2 years

Powered

Less than 1 year

1 – 2 years

More than 2 years

5. How long do you spend in your chair during the day?

Manual

Less than 1 hour

Most of the day

All of the day

Powered

Less than 1 hour

Most of the day

All of the day

6. When in your wheelchair do you use equipment to help with –

- a. Breathing
- b. Feeding
- c. Communicating
- d. Toileting
- e. Taking medication
- f. Sitting comfortably
- g. Other _____
- h. No. I don't use equipment in my chair
- i. Not sure



7. Carrying the equipment you need on your wheelchair is:

Manual

Easy

OK

Challenging

Give details:

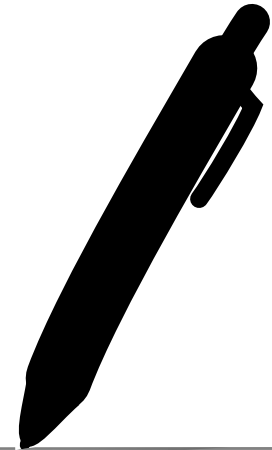
What would make this better?

Powered

Easy

Ok

Challenging



8. How do you get into your chair?

Manual

Without help from anyone

With help from another person(s)

Using a hoist

Using other equipment

Give details:

What would make this better?

Powered

Without help from anyone

With help from another person(s)

Using a hoist

Using other equipment

9. Getting into your wheelchair is:

Manual

Easy

OK

Challenging

Powered

Easy

Ok

Challenging

Give details:

What would make this better?

10. Where do you use your wheelchair?

Manual

Inside the house

Outdoors

Inside school/college

On public transport

Powered

Inside the house

Outdoors

Inside school/college

On public transport

Give details:

What would make this better?

11. Adjusting your chair (including seating system) is:

Manual

Easy

OK

Challenging

Powered

Easy

Ok

Challenging

Give details:

What would make this better?

12. Do you think the way your chair looks is:

Manual

Poor

OK

Good

Powered

Poor

OK

Good

If you have tried to make your chair look better please tell us more:

What would make it even better?

13. What do you like best about your current wheelchair?

If you have more than one please tell us about your favourite.

Manual

Powered

14. What is the biggest problem with your current wheelchair?

If you have more than one, please tell us about the one you like the least.

Manual

Powered

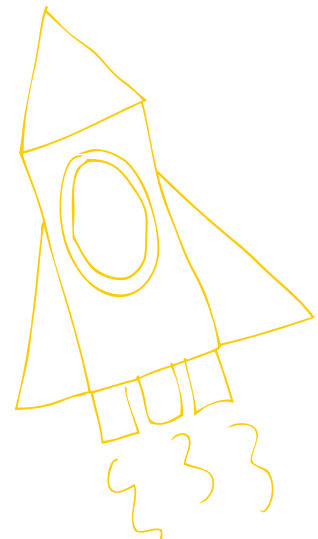
15. What is your favourite piece of technology at the moment? (e.g. iPod, laptop)

Comments:

16. If you were designing a wheelchair of the future what would be the top five things you would want?

Don't worry if you have less than five.

- 1.**
- 2.**
- 3.**
- 4.**
- 5.**



If you want to draw a sketch please post back with the survey to the address on the following page.

17. Has an adult helped you complete this survey?

Yes – a parent

Yes – another adult

No

18. Any other comments?

Thank you for taking our survey!

Your participation is hugely appreciated.
Please return no later than 14th May to:

**Design a Wheelchair,
Whizz-Kidz FREEPOST LON 10990,
LONDON SW1E 5BR**